

DECA YG2043

Multi Interface Test Erasure Solution

SATA SAS USB3.0



**Optional Interface
SCSI Fibre Channel
mSATA IDE**

- ✓ Test / Erase
- ✓ Repair
- ✓ No Licensing
- ✓ NIST Compliant

“YEC has served HDD professionals with testers /erasers for over 30 years.”

DECA YG2043 offers advantages :

Technology

- High speed 6G HDD/SSD test and erase - SATA 6G SAS 12/6G Options: mSATA SCSI FC IDE
- Flexibly test and erase 2.5” and 3.5” SATA/SAS mix simultaneously
- Scalable from 4 ports to 20 ports
- Each port is hot swappable, operated independently, eliminating time-wasting power cycles.
- YEC Quick Loaders reduce time for cable connections drastically. Size adjustable for 2.5” and 3.5” drives. NEW! - HDD caddies connectable.

Test •Erase •Repair

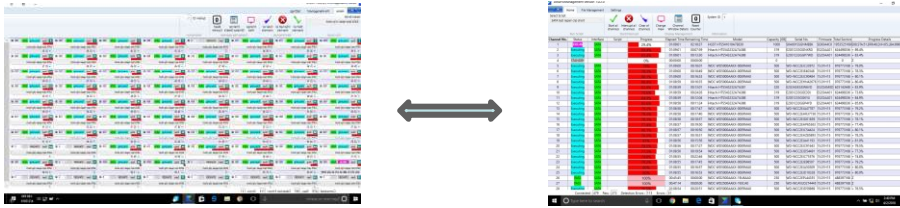
- Customizable scripts that include NIST800-88 Purge, Clear, Verify, DoD5220.00-M (3, 7 times), Secure Erase Enhanced and more. Scripts are modifiable to fit new test/erase requirements. Each channel can even run a script separately.
- Versatile test scenarios - Ready Time, Device Identify, SMART, Error Log Read, Buffer Test, Power Cycle, DCO/HPA Removal, Acoustic Management, Test & Repair, Butterfly Seek & Write, Sequential Read, Read Write Block Test, Read Random, Write Random, Target Scan, Checksum Calc, Short Test
- Repair damaged and weak sectors by reallocation

For more information, please visit www.yecglobalsolutions.com or call (657) 298-3276.

DECA YG2043

Efficiency

- No annual contract No licensing-per-wipe fee
- YEC Quick Loader plug-ins eliminate manual cable connections and reduce wear-and-tear on expensive high quality cables.
- No IT knowledge or experience required for operators on Day 1.
- Highly visible Pass/Fail result LED facilitates operators in engaging in other tasks in distance.
- reporting: Detail logs and CSV database are automatically created. Certificate template is customizable.
- 2 ways to view progress status



- Made in Japan

Recommended Users

- Value added ITAD, New drive qualification for data centers, Quality assurance, Manufacturing, Re-manufacturing, Reverse logistics, RMA control, New product development, HDD/SSD life cycle management, Education, Health Care IT

SYSTEM SPECIFICATIONS

	Descriptions
Model	DECA YG2043
Part No.	Y-2064
Supported Interface	SATA III 6Gbs/ SAS 6Gbs/ USB3.0 5Gbs /SCSI Ultra320 /FC 4Gbs
Dimensions	20 "x 12" x 6"
Weight	17lbs 7.5kg
Power Specifications	AC 100-240V 50/60Hz
Power Consumption	2.5A (100W)
Operating Environment	Temperature 10 - 35°C (50 - 95° F) Humidity 20 - 80%
Communication Port	1 port (1000BASE-T / 100BASE-TX / 10BASE-T)
Maximum Port Connections	5 units/20 ports
Maximum Drive Capacity	SATA: 144PB SAS: 9.4ZB M.2: 9.4ZB SCSI: 9.4ZB FC: 9.4ZB
Host Software OS	Windows7/8/8.1/10
Options	Fibre Channel Kit, SCSI Kit, IDE Kit, mSATA adapter

Developed and Manufactured by



YEC Co., Ltd.

3-44-45 Minami Machida, Machida, Tokyo 194-0005 Japan
 TEL:+81- 42-796-8511 FAX: +81- 42-796-2367
<http://www.kk-yec.co.jp>

Globally Distributed by

YEC Global Solutions, Inc.

10541 Calle Lee Suite 121, Los Alamitos, CA 90720
 TEL: 657-298-3276
www.yecglobalsolutions.com
sales@yecglobalsolutions.com