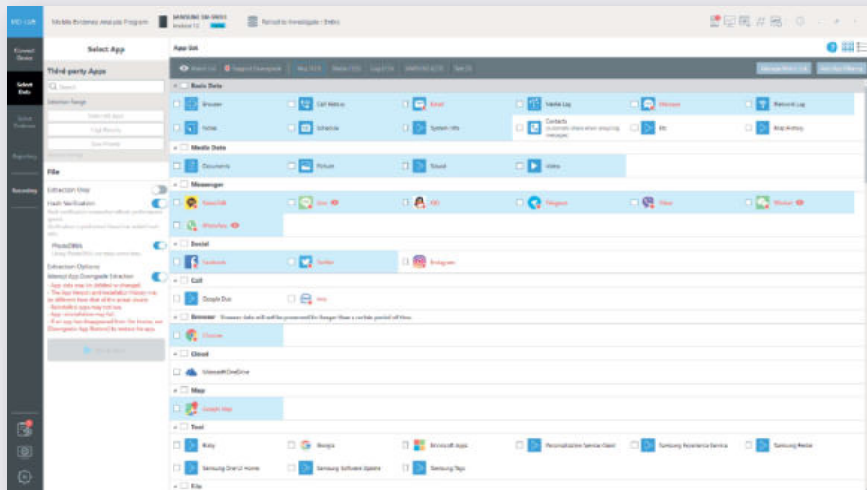


MD-LIVE

Mobile Data Extraction and Analysis Tool for on-the-spot investigation and triage

MD-LIVE supports quick on-site investigation with device scanning, extraction, analysis, and reporting features. Selective extraction, Watch List, Keyword, and Hash search features enable time-efficient investigation and prevent privacy infringement.



System Requirements

- OS Windows 8/10/11 (64 bit)
- CPU i5 or above
- RAM 8GB or above
- Disk 256GB or above
- Display 1200x700 or above
- USB 2 or more USB 2.0/3.0/3.1 ports
- Microsoft .Net Framework 4.6.2

Product Components

- MD-LIVE Installation Software (HDD/USB Memory/Online)
- USB Dongle Key 1 EA
- Warranty 1 Year

Hardware Package Option (MD-PORTABLE)

- Rugged case
- Laptop or Tablet
- Cable sets
- HDMI Capture board
- MD-CAMERA (External HD Camera)

Product Specification

Extraction

- Automatic recognition of smartphone model
- Detail information view for installed apps
- Various filtering option for installed apps
- Extraction guides and notifications per OS type
- Display of extraction progress by app
- Multi-space notification
- Selective extraction by apps or by time period
- Selective mode of Scan, Extraction, Analysis flexible to on-site use cases
- Notification of the battery level at the device before extraction

Analysis

- App analysis
 - Over 2,000 Android and iPhone smartphone apps
 - Messenger data decryption - Facebook Messenger, WeChat, Signal, Wickr, Discord etc.
 - Multi-account app analysis - WeChat, Telegram, Instagram, Facebook Messenger etc.
- Various DB format analysis: SQLite, Realm, Bolt, ESE etc.
- Various filesystem analysis
- Signature-based multimedia analysis

Analysis Result View

- Customized filters by analysis result types
- Ability to view selected items or search results
- Messenger view
- GPS geolocation visualization support with the online and offline maps
- Keyword list search by import of external file or manual input
- Supports Watch List and the user-defined filter of Apps in Watch List
- Hash Sets search by import of external file, manual input, Project VIC(UK, US, CA), Photo DNA
- Internal viewers for documents, database, Hex, text, image, audio and video
- Browser for Internet browsing history view

Recording Investigation

- Photographing, video/audio recording of evidence and investigation process by MD-CAMERA (External HD Camera) or HDMI capture board supplied as option items
- Mirrored and remote-controlled smartphone screen can be captured and recorded
- PC screen recording of MD-LIVE to reproduce or to verify its forensic process
- Log analysis to track the recent history of smartphone app usage and system history
- Monitoring active phone process for malware or specific active app investigation

Reporting

- Report types
 - Analysis results summary - summarized result
 - Analysis results report - detail result
 - Electrically stored information - extracted files list
- Report options
 - Anonymous reporting to protect the witness or the victim by hiding owner information
 - Large image reporting to display one image on each page not to scales down
 - Archive report file as MDF/ZIP/TAR/DD
 - Report file format - PDF, Excel
 - HASH algorithms options - MD5, SHA1/224/256/384/512, RIPEMD128/160/256/320

**Contact us for more detailed product spec information*

